

-COMM jacks shall be CSA / UL Recognized/Classified or Listed, Keystone style to mount in comm. openings.



STANDARD LENGTHS  
8", 10" & 12"

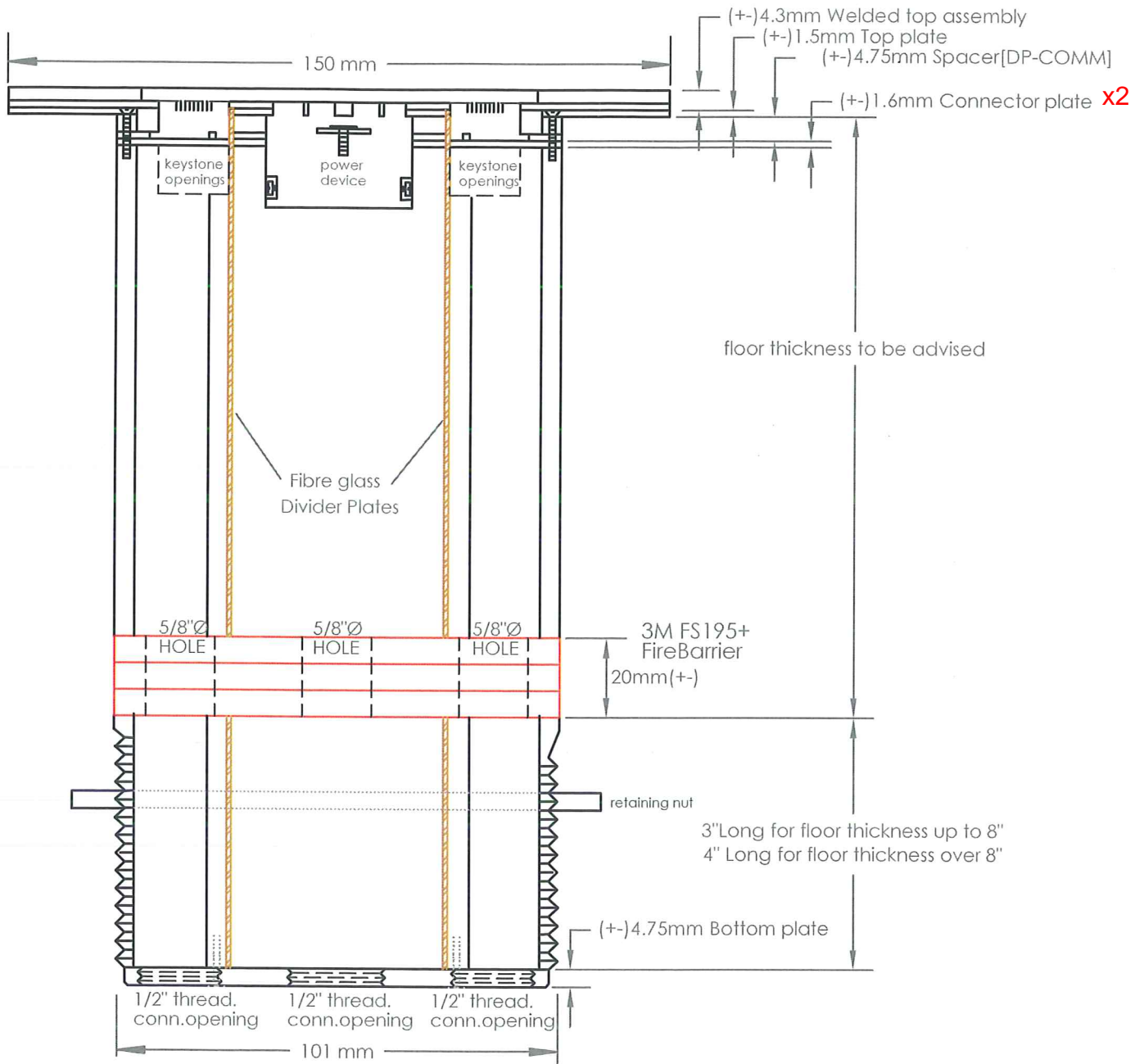
FITS STANDARD 4" CORED HOLE

ORDERING INFO-(SEE ABBREVIATIONS)

SLAB THICKNESS \_\_\_\_\_  
 RECEPT.TYPE/colour \_\_\_\_\_  
 DATA MANUF./colour \_\_\_\_\_  
 COVER TYPE \_\_\_\_\_

**PROPRIETARY AND CONFIDENTIAL**  
 THE INFORMATION CONTAINED IN THIS DRAWING IS THE SOLE PROPERTY OF NOCOM. ANY REPRODUCTION IN PART OR AS A WHOLE WITHOUT THE WRITTEN PERMISSION OF NOCOM IS PROHIBITED.

		DIMENSIONS ARE IN MM TOLERANCES: ANGLES: ± DEGREE LINEAR: ±MM (UNLESS SPECIFIED)		NAME	DATE (yy-mm-dd)	JOB TITLE:	
				DRAWN	TJP	10-02-18	
				CHECKED			
				ENG. APPR.			
				MFG APPR.			
				Q.A.			
				COMMENTS:			
MATERIAL		See Varient table					
FINISH							
NEXT ASST	USED ON						
APPLICATION		DO NOT SCALE DRAWING					
							
				by 			
				888-225-2478		www.nocom.ca	
SIZE	DWG. NO.		REV.				
A	MOI-DP1-COMM4		RS				
SCALE=N.T.S.				WEIGHT:		SHEET 2 OF 3	



FITS STANDARD 4" CORED HOLE

all tolerance (+ -) = 0.3mm

ORDERING INFO-(SEE ABBREVIATIONS)

SLAB THICKNESS \_\_\_\_\_  
 RECEPT.TYPE/colour \_\_\_\_\_  
 DATA MANUF./colour \_\_\_\_\_  
 COVER TYPE \_\_\_\_\_

**PROPRIETARY AND CONFIDENTIAL**

THE INFORMATION CONTAINED IN THIS DRAWING IS THE SOLE PROPERTY OF NOCOM. ANY REPRODUCTION IN PART OR AS A WHOLE WITHOUT THE WRITTEN PERMISSION OF NOCOM IS PROHIBITED.

		DIMENSIONS ARE IN MM TOLERANCES: ANGLES: ± DEGREE LINEAR: ± MM (UNLESS SPECIFIED)		NAME	DATE (yy-mm-dd)	JOB TITLE:  <b>MULTICONNECT™</b> by <b>NOCOM®</b> 888-225-2478 www.nocom.ca	
		MATERIAL See Variant table		DRAWN	TJP		10-02-18
		FINISH		CHECKED			
NEXT ASST		USED ON		ENG. APPR.			
APPLICATION		DO NOT SCALE DRAWING		MFG APPR.			
				Q.A.			
				COMMENTS:			
SIZE A		DWG. NO. MOI-DP1-COMM4		SCALE=N.T.S.		REV. R3	
				WEIGHT:		SHEET 3 OF 3	