

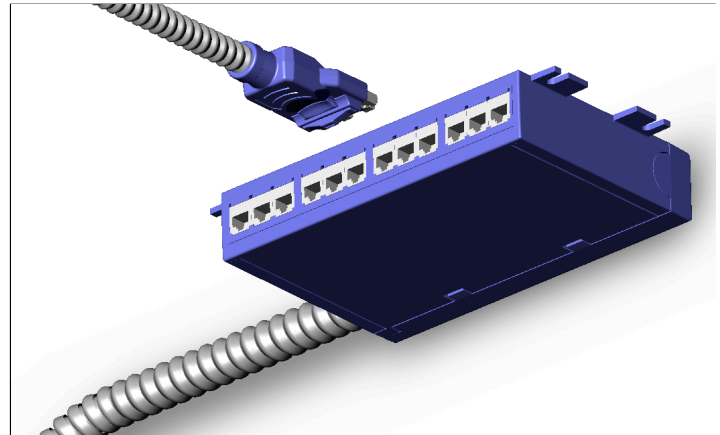


## Manufactured voice/data cabling system

**Nocom Modular Cabling System (N.M.C.S)** is a safe, reliable and cost-effective turn-key voice/data zone cabling solution.

From patch panel to workstation, pre-terminated connections provide cost savings during installation and maintenance. Moves, adds, and changes are all plug-in type connections.

Lightweight Ultralx® steel armour provides superior fire, mechanical, EMI and bend radius protection. Non-halogenated construction and RoHS compliant materials round out this superior alternative to



**KOHS**

Lead Free

**LSZH**

Low Smoke, Zero Halogen

**Reusable**

Plug-and-play Connections

## Features & Benefits

- **Manufactured and verified to ANSI/TIA/EIA-568 standards in a clean, controlled environment – not on the job site**  
N.M.C.S Trunk Cables and Drop Cables are certified and guaranteed to meet or exceed Category 5e or Category 6 performance standards. Performance data for every cable is logged and made available to customers.
- **Vendor-neutral utilizing standards-based components**  
N.M.C.S is compatible with most cable and connector manufacturers. Standards-based connectors allow for seamless integration with existing systems and equipment.
- **Reduces interference from sources of EMI**  
Ultralx premium steel armour reduces susceptibility to electromagnetic interference enhancing network performance.
- **Steel fire barrier - Melting point >1300°C (2500°F)**  
Ultralx premium steel armour acts as a fire barrier protecting cable in the event of fire.
- **Mechanical protection from excessive bend radius and crush**  
Ultralx premium steel armour provides mechanical and bend radius protection as cables are being pulled through ceilings, floors and walls resulting in lower maintenance costs and down-time. Protect your investment.
- **Non-combustible, eco-friendly construction**  
Reducing the risk of deadly fire and toxic gases, N.M.C.S is constructed with non-combustible steel armour and low-smoke zero-halogen cable and assemblies.
- **Eliminates abandoned cable in air-handling spaces**  
Modular, turn-key design of N.M.C.S allows for simple, safe and cost-effective re-use, relocation and maintenance of your network cabling.
- **An intelligent building solution**  
Plug-in connections make N.M.C.S re-useable and re-locatable, not disposed of or abandoned when technology demands change.
- **Most economical of all comparable cabling solutions**  
N.M.C.S can be installed for less than cable in conduit and offers long term cost savings on cabling maintenance.



## Nocom Modular Cabling System Configurations

N.M.C.S is presented in the following systems<sup>†</sup>, carrying 8 or 12 four-pair UTP (or FTP) cables per zone.

N.M.C.S is designed around a four-workstation zone distribution.

Each Trunk Cable is designed to feed four workstations each with the following configurations:

### **8 Circuit System**

1 Voice  
1 Data (Cat 5e/6/6A<sup>††</sup>)

### **12 Circuit System**

1 Voice  
2 Data (Cat 5e/6)

<sup>†</sup> Other configurations not presented here are available by contacting Electec

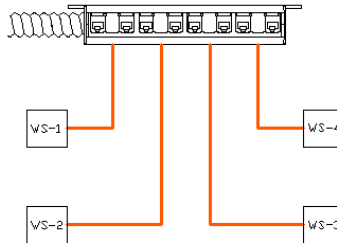
<sup>††</sup> 8 Circuit system available in a shielded (FTP) Augmented Cat 6, 10-Gig System.

### **8 Circuit System**

(1 Voice + 1 Data per workstation)



- Trunk Cable/Zone Consolidation Point feeds up to 4 workstations.
- One drop cable (2 port) per workstation allows for simple and flexible moves, adds & changes

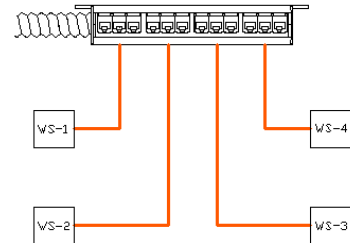


### **12 Circuit System**

(1 Voice + 2 Data per workstation)



- Trunk Cable/Zone Consolidation Point feeds up to 4 workstations.
- One drop cable (3 port) per workstation allows for simple and flexible moves, adds & changes



## Planning Nocom Modular Cabling Systems

- (1) Identify cabling system type (Cat 5e/Cat 6/Cat 6A). Other systems (e.g. fiber, hybrid) available on request.
- (2) Recognize your cabling distribution requirements. How many communication circuits required per workstation?  
This points you to either an 8 Circuit or 12 Circuit system.
- (3) Using the 8 Circuit (1+1) or 12 Circuit (1+2) systems described above, divide the number of workstations by 4 to determine the base amount of Trunk Cables needed. Another rule of thumb, which “future-proofs” your space is to plan one Trunk Cable for every 300 square feet regardless of your workstation distribution.
- (4) Determine Trunk Cable lengths and quantities. Factor for unforeseen site conditions and future flexibility and/or relocation. Order both LH and RH trunk cables that will be installed together to create your patch panel.
- (5) Determine Drop Cable lengths for each zone/Trunk Cable.
- (6) Armed with the catalogue numbers on the next page, you are ready to create your bill of materials.

## Third Party Testing


- **Exceeds requirements of UL Standard 2043** (Fire Test for Heat and Visible Smoke Release for Discrete Products and their Accessories Installed in Air-Handling Spaces)

N.M.C.S is acceptable for use in environmental air handling spaces other than ducts or plenums in accordance with NEC 300.22(c)


## Nocom Modular Cabling System Catalogue Numbers

▪ **N.M.C.S Horizontal Trunk Cable:**

1D-A \_\_\_\_\_ -BU\_\_\_\_\_S



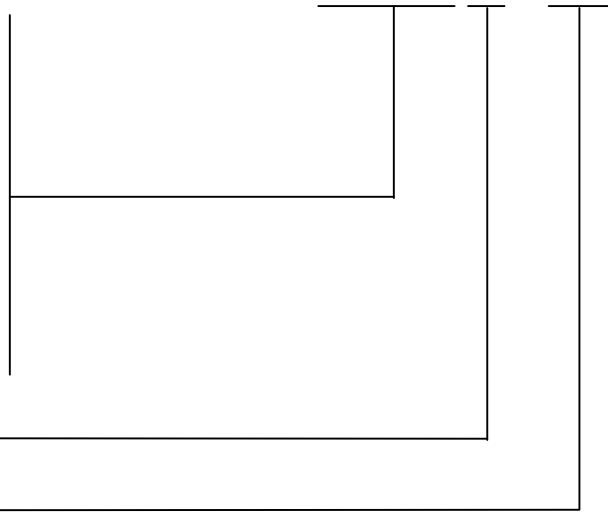
4 Voice, 4 Data (Cat 6 UTP, 568A) = System '361008'  
 4 Voice, 4 Data (Cat 6A FTP, 568A) = System '363008'



4 Voice, 8 Data (Cat 6 UTP, 568A) = System '361012'  
 12 Voice / Data (Cat 5e UTP, 568A) = System '351012'

Trunk Cable, LH panel = 'TL'  
 Trunk Cable, RH panel = 'TR'


Length (150 = 15.0m) = 'III'




Available Lengths:	<b>150</b> (15m / 49.2ft)	<b>360</b> (36m / 118.1ft)	<b>570</b> (57m / 187.0ft)	<b>750</b> (75m / 246.0ft)
	<b>180</b> (18m / 59.0ft)	<b>390</b> (39m / 127.9ft)	<b>600</b> (60m / 196.8ft)	<b>780</b> (78m / 255.8ft)
	<b>210</b> (21m / 68.9ft)	<b>420</b> (42m / 137.8ft)	<b>630</b> (63m / 206.6ft)	<b>810</b> (81m / 265.7ft)
	<b>240</b> (24m / 78.7ft)	<b>450</b> (45m / 147.6ft)	<b>660</b> (66m / 216.5ft)	<b>840</b> (84m / 275.5ft)
	<b>270</b> (27m / 88.6ft)	<b>480</b> (48m / 157.4ft)	<b>690</b> (69m / 226.3ft)	<b>870</b> (87m / 285.4ft)
	<b>300</b> (30m / 98.4ft)	<b>510</b> (51m / 167.3ft)	<b>720</b> (72m / 236.2ft)	<b>900</b> (90m / 295.2ft)
	<b>330</b> (33m / 108.2ft)	<b>540</b> (54m / 177.1ft)		

▪ **N.M.C.S Workstation Drop Cable:**

1D-A \_\_\_\_\_ -DLWH\_\_\_\_\_S

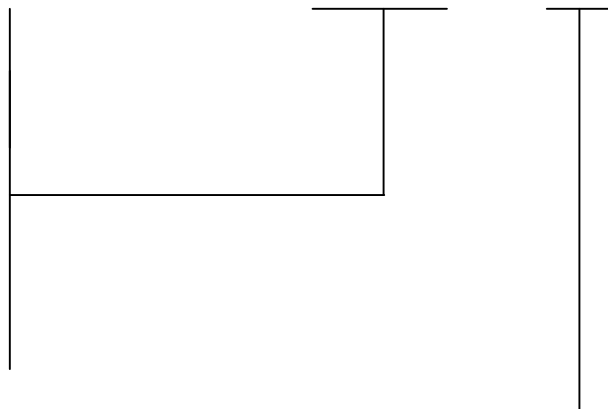


1 Voice, 1 Data (Cat 6 UTP, 568A) = System '361008'  
 1 Voice, 1 Data (Cat 6A FTP, 568A) = System '363008'



1 Voice, 2 Data (Cat 6 UTP, 568A) = System '361012'  
 3 Voice / Data (Cat 5e UTP, 568A) = System '351012'

Length (150 = 15.0m) = 'III'



Available Lengths:	<b>090</b> (9.0m / 29.5ft)	<b>180</b> (18.0m / 59.0ft)	<b>270</b> (27.0m / 88.6ft)	<b>330</b> (33.0m / 108.2ft)
	<b>120</b> (12.0m / 39.4ft)	<b>210</b> (21.0m / 68.9ft)	<b>300</b> (30.0m / 98.4ft)	<b>360</b> (36.0m / 118.1ft)
	<b>150</b> (15.0m / 49.2ft)	<b>240</b> (24.0m / 78.7ft)		

**Options include:** Optical Fiber, Hybrid Systems, Specialized Wiring (coaxial, fire alarm, audio/video etc.)  
 Backbone Applications  
 Bix Terminations  
 Custom colours, lengths, jacketing, armouring

**NOCOM**<sup>®</sup>  
 105 Willowlea Rd  
 Carp, ON K0A 1L0  
[www.nocom.ca](http://www.nocom.ca)

Phone: (613) 831-8102  
 Fax: (613) 831-8103  
 Toll Free: (888) 225-2478